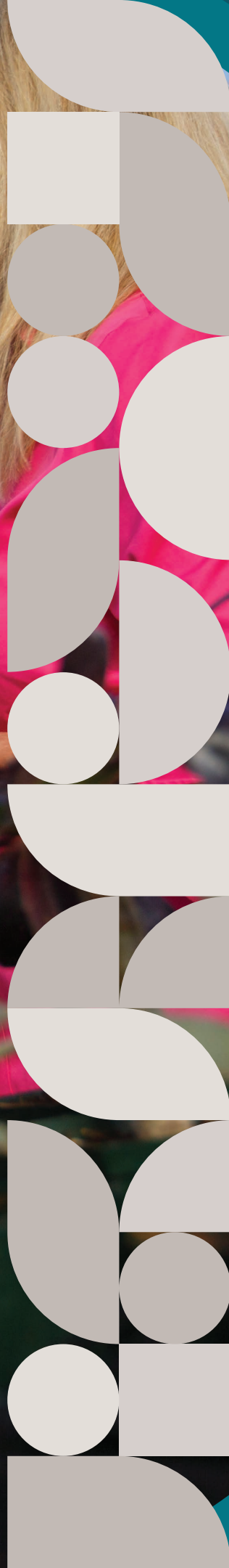


# 2022 ANNUAL REPORT





# **TABLE OF CONTENTS**

LETTER FROM THE PRESIDENT ..... p3



**1** | BUILDING A STRONG AND DIVERSE CLIMATE ACTION NETWORK ..... p4



**2** | CATALYZING ACTION, FACILITATING CONNECTIONS ..... p7



**3** | PARTNERING FOR CLIMATE ACTION ..... p17



**4** | SUPPORTING OUR NETWORK ..... p19





# LETTER FROM THE PRESIDENT

I am delighted to present Second Nature's annual report for 2022 and share the progress we have made in catalyzing climate action within the higher education sector. Building a robust network that creates climate solutions through collaborations, connections, and partnerships is at the heart of our organization's work. We have created a vibrant community with diverse stakeholders, enabling them to design, implement, and showcase bold and innovative campus solutions that advance our collective vision for a sustainable future.

Diversity, equity, inclusion, accessibility, and justice (DEIAJ) is critical to our network engagement efforts. In 2022, we produced a new toolkit to help campuses include core DEIAJ principles in their climate action plans. We also engaged higher education institutions that serve underrepresented communities, including community colleges, Historically Black Colleges and Universities (HBCUs), and Minority Serving Institutions (MSIs). By fostering partnerships and offering tailored resources, we strive to ensure that all higher education institutions have the opportunity to participate in and benefit from the climate action network we have cultivated.

As we look to the future, we are energized by these opportunities and remain committed to further catalyzing climate action within higher education. We will continue to grow and strengthen our network, forging new connections and facilitating diverse participation to drive transformative change. By identifying and empowering complementary strengths in the sector, engaging stakeholders with actionable resources, and promoting cooperation, we aim to create a ripple effect far beyond our immediate reach.

I want to express my heartfelt appreciation to everyone participating in our journey. Your commitment and passion profoundly impact Second Nature's success, the higher education sector, and the global fight against climate change. Together, let us continue to catalyze climate action, foster relationships, and forge partnerships to shape a sustainable future for generations to come.

In solidarity,

Handwritten signature of Tim Carter.

Tim Carter  
President



**1** | BUILDING A STRONG  
AND DIVERSE CLIMATE  
ACTION NETWORK



# WELCOMING NEW SIGNATORIES

In 2022, nine campuses became part of the Climate Leadership Network, joining a wide-ranging network of more than 400 colleges and universities across the country. Engagement from schools at the community college level to large state universities demonstrates a growing understanding of the need for climate action on our campuses and for collaboration and collective action within our sector.



## 4 Signed

The Climate Commitment integrates carbon neutrality with climate resilience and provides a systems approach to mitigating and adapting to a changing climate.



## 5 Signed

The Carbon Commitment is focused on reducing greenhouse gas emissions and achieving carbon neutrality as soon as possible.



Northern Illinois University



# NETWORK ENGAGEMENT



## COMMITMENTS 3.0 WORKING GROUP

In 2022, Second Nature launched a process to formulate Commitments 3.0, the next generation of the Presidents' Climate Leadership Commitments. The goal was to reflect necessary and foundational framing in climate justice principles, update existing technical guidance to reflect the urgency of the climate crisis, and consider various membership models. The stakeholder engagement process included over a dozen meetings with campus sustainability staff, Presidents, and industry leaders. These conversations have laid the groundwork for the next iteration of the Presidents' Climate Leadership Commitments, and we will continue to build on this as we evolve to meet the challenges of climate change.



## INTERSECTIONAL CLIMATE ACTION LEADERS WORKING GROUP

Launched in the summer of 2022, this Working Group is comprised of BIPOC-identified faculty, staff, administration, students, community partners, champions, and advocates of HBCU and MSI institutions and is the result of months of intentional, authentic relationship building and strategic planning. The purpose of creating this space is to strategize on how HBCUs and MSIs can build, grow, and sustain their capacity to advance climate action and sustainability initiatives.



## ACADEMICS FOR CLIMATE ADVOCACY WORKING GROUP

Over 400 academics have joined the Academics for Climate Advocacy Working Group, a new initiative aimed at engaging academics from higher education institutions from across the nation. This Working Group is for academics interested in utilizing their institutional position and expertise to help advance climate policy at the municipal, state, and federal levels. Academics will convene on a quarterly basis for Working Group meetings, be contacted when there are meaningful opportunities to engage in climate advocacy, and receive regular updates on relevant policy developments in their jurisdiction.



## **2** | CATALYZING ACTION, FACILITATING CONNECTIONS

# ACCELERATION FUND CATALYZES CAMPUS ACTION AND BUILDS CAPACITY

Nine campuses, representing a diverse range of schools around the country, received support through the Acceleration Fund to help realize decarbonization initiatives, campus-community partnerships, and resilience projects. The awarded projects are campus-driven, rooted in a dedication to advancing the principles of climate justice and equity, and meet the unique aims of individual schools and their communities.

The Acceleration Fund was established in 2020. The Third Round of funding in 2022 was made possible by a generous grant from an anonymous foundation. These nine campuses were awarded up to \$10,000 each to further their campus communities' climate, resilience, and justice initiatives:



Acceleration Fund



CAL POLY HUMBOLDT  
(Arcata, California)

The Climate Resilient Landscaping Demonstration Project converted an area of campus to native plants adapted to predicted climate stressors, which will serve as a living lab for research and provide important habitat for native pollinators.



SACRAMENTO  
STATE

CALIFORNIA STATE  
UNIVERSITY, SACRAMENTO  
(Sacramento, California)

California State University, Sacramento is building capacity in underserved communities, partnering with Breathe California and United Latinos. Interns helped community groups use air monitoring technologies to understand air quality challenges and address environmental justice concerns.



California State University  
MONTEREY BAY  
College of Science

CALIFORNIA STATE  
UNIVERSITY, MONTEREY BAY  
(Seaside, California)

Acceleration Fund dollars enhanced an existing partnership with the Transportation Agency for Monterey County to further their Safe Routes to Schools project. This initiative reduces traffic congestion and carbon emissions while encouraging activity in K-12 youth.



CHATHAM UNIVERSITY  
(Pittsburgh, Pennsylvania)

As part of the Higher Education Climate Consortium in the greater Pittsburgh area, Chatham University's Acceleration Fund award supported the hiring of fellows to advance the consortium's work through data, communications, and outreach.

# **ACCELERATION FUND CATALYZES CAMPUS ACTION AND BUILDS CAPACITY**

---



UNIVERSITY OF ILLINOIS  
CHICAGO  
(Chicago, Illinois)

Acceleration Fund dollars facilitated growing partnerships between University of Illinois Chicago and Urban Growers Collective to develop a climate justice framework for working in a historically underserved community.



VIRGINIA WESLEYAN  
UNIVERSITY  
(Norfolk, Virginia)

Thanks to Acceleration funding, Virginia Wesleyan University interns worked closely with the Elizabeth River Project to promote environmental justice, increase energy efficiency, and reduce tidal flooding issues.



THE UNIVERSITY OF ARIZONA  
(Tucson, Arizona)

University of Arizona's award supported the school's work with the nonprofit Watershed Management Group on the Desert Waters Climate Justice Internship. Students of color and limited-income students gained training to address real world climate and environmental justice issues through paid internships.



UNIVERSITY OF MISSISSIPPI  
(Oxford, Mississippi)

University of Mississippi used its Acceleration Fund award to enhance community partnerships in two areas: in Ecru through the development of a native plant garden in conjunction with the M.B. Mayfield Museum, and in Pontotoc, through an internship to support Spanish-speaking customers of the area's farmers market and study risks to the regional food system.



THE UNIVERSITY OF  
CALIFORNIA LOS ANGELES  
(Los Angeles, California)

UCLA's Acceleration Fund award enabled a partnership housed at the university to work with the LA County Department of Public Health to launch a media campaign to help those most at-risk — low-income communities and BIPOC communities — protect themselves from heat-related illnesses in the face of rising temperatures.

## **STORY:**

### Fostering Collaboration and Action at Agnes Scott College

# AGNES SCOTT COLLEGE

Agnes Scott College, a private liberal arts institution in Decatur, Georgia, has been active in the Second Nature network since signing the Climate Commitment in 2015. While there has always been a campus-town connection, the school did not begin working on climate resilience in earnest with the city of Decatur until around 2018. For the small campus of about 1,000 students, working with the city and surrounding institutions, including Columbia Theological Seminary and Decatur Public Schools, was a step forward in building the strong relationships that are foundational to resilience.

The infusion of grant money from the Acceleration Fund was transformational for the college. Brittany Judson (Agnes Scott College, '21) played an integral role in bringing the Climate Resilience Plan to life. With the support of the Acceleration Fund, Brittany was hired on to help draft the plan and engage stakeholders in shaping the process.

"The Acceleration Fund expanded our capacity and made it possible for me to facilitate community groups, keep planning committee meetings moving forward, and integrate local government collaboration," Brittany said.

"It really allowed us to prioritize the completion of the Climate Resilience Plan," said Kimberly Reeves, Executive Director of Agnes Scott's Center for Sustainability. Moving the plan forward is no small feat: with 75 strategic goals, multiple subcommittees covering everything from emergency management to assessment and communications, and four distinct priority areas (People, Planet, Place, and Partnership), the Climate Resilience Plan is comprehensive and intensely collaborative.

Agnes Scott College and the city of Decatur are positioned to work together for the long-term to bring the plan to life. Together, they are leveraging existing commitments and programs while establishing new frameworks and strategies that will intentionally engage and support the broader community in meaningful and just ways. This work is intended to build community resilience at the local level.

"Now, with implementation underway and ongoing refinement of the Plan, Agnes Scott College is making incredible progress," stated Brittany. "That is happening thanks, in part, to the generosity of the Acceleration Fund."



# STORY:

## Strengthening an Already Resilient Community at University of Wisconsin–Madison



The “Wisconsin Idea” — the belief that knowledge and the university’s resources should be shared beyond the campus community — is integral to the University of Wisconsin system. As the university recognizes the 175th anniversary of its founding, the University of Wisconsin–Madison is putting the idea into practice, working towards the development of a community resilience center to serve Madison’s south side neighborhood.

UW–Madison’s campus meets the community along Park Street, a main thoroughfare that functions as a gateway to the university. The neighborhood of about 6,400 people is the city’s most diverse community — and among its most disadvantaged. The impacts of decades of structural racism, from redlining to disinvestment, continue to have profound effects on residents.

The community is resilient, however, and today the neighborhood is experiencing an exciting period of redevelopment and revitalization which bring their own pressures of gentrification. Given its critical geographic location and spirit of taking learning beyond the boundaries of its campus, UW–Madison’s Office of Sustainability recognized an opportunity to complement the work already underway. With support from the Acceleration Fund, they began exploring how a community resilience center could fill gaps in services and meet the community’s everyday needs while planning ahead for

times of disruption from natural disasters or human-caused hazards and recovery from them.

“We wanted to be very intentional in our approach to generating the concept for the community resilience center and be certain that this project reflects the shared values and goals of the community,” said Josh Arnold, Campus Energy Advisor for the UW–Madison Office of Sustainability. “We know there’s a strong and resilient network of community groups and individuals, and we want to better understand how we can help fill in gaps and become a trusted source of information, not just in times of disruption, but every day.”

The Acceleration Fund made it possible for UW–Madison to approach this project with that high degree of intentionality. Staff from the Office of Sustainability have been able to work closely with local government officials and agencies, community leaders, and local businesses. Together, they developed a conceptual framework for a community resilience center that honors the wishes and needs of the community, puts resources where they are most needed, and ensures future activity complements the multitude of efforts already underway in Madison’s thriving south side community.

Through this process, UW–Madison’s team has fostered strong relationships with partners, leading to some unexpected outcomes. Notably, the university partnered with the Urban League of Greater Madison to incorporate sustainability — including electric vehicle chargers and solar power — in the development of the organization’s new facility

dedicated to promoting and supporting Black businesses and entrepreneurs. Other surprising partnerships were student-generated, including the future implementation of solar-powered information kiosks and charging stations.

The support from the Acceleration Fund and the ability to connect with experts at Second Nature and the Urban Sustainability Directors Network were vital to the conceptualization of the University of Wisconsin–Madison’s community resilience center, and laid the foundation for a powerful community resource.



Acceleration Fund helped UW–Madison connect with ongoing community efforts, including the local Urban League’s Black Business Hub, which incorporates sustainable features like solar power.

# PRO BONO CONSULTING FUND OFFERS TECHNICAL ASSISTANCE

As part of Second Nature's commitment to providing resources and tools for helping higher education institutions define and reach their climate goals, we were proud to offer pro bono consulting services to six campuses.

These services were designed to help campuses achieve Climate Action Planning goals or facilitate their shift to renewable power. Pro bono consulting services are made possible by Brailsford & Dunlavey and Coho Renewables, both Second Nature partners.



## CLIMATE ACTION PLANNING



(Dallas, Texas)

Consulting services helped Dallas College, a newly formed institution of seven community colleges, facilitate stakeholder conversations and improve collaboration among departments.



(Asheville, North Carolina)

UNC Asheville's consulting services focused on refining their existing Climate Action Plan, identifying additional carbon reduction opportunities, setting climate action timelines, engaging stakeholders, and creating outreach materials.



(Oshkosh, Wisconsin)

Pro bono consulting enabled University of Wisconsin Oshkosh to plan intensive sessions to get a 30,000-foot view of achieving climate neutrality, to help bring about their Climate Action Plan and lay the foundation for similar work at other University of Wisconsin campuses.

## SHIFTING TO RENEWABLE POWER



(Flagstaff, Arizona)

As it prepared to move forward with Scope 2 decarbonization, pro bono consulting helped Northern Arizona University forecast needs and identify renewable energy projects.



(Riverside, California)

UC Riverside has made great strides in advancing its renewable energy portfolio. Support from the pro bono program assisted the campus as it investigated next steps for Scope 1 and Scope 2 neutrality.



(Baltimore, Maryland)

Pro bono consulting helped University of Maryland, Baltimore explore renewable energy options to meet the needs of their urban campus and work with their unique infrastructure.

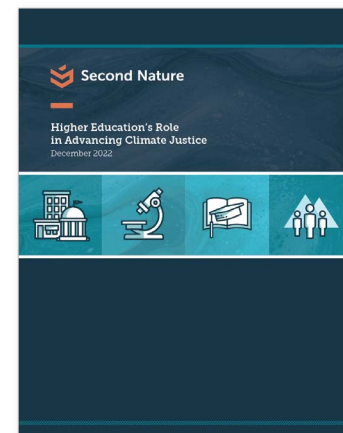
# RESEARCH AND RESOURCES

## INTRODUCING NEW CLIMATE JUSTICE AND ACTION PLANNING RESOURCES

In 2022, Second Nature's Climate Justice Working Group introduced a new DEIAJ Toolkit to help colleges and universities center principles of diversity, equity, inclusion, accessibility, and justice (DEIAJ) in their Climate Action Plans. Deploying the DEIAJ Toolkit at scale across over 400 member institutions will ultimately serve to both leverage and strengthen the higher education sector's strengths to cultivate campus-community relationships and cross-sector partnerships. Additionally, the Toolkit may be useful for other sectors interested in how DEIAJ principles can be embedded into their own climate action planning.

[See the toolkit](#)

## INTEGRATING DEIAJ PRINCIPLES INTO CLIMATE ACTION PLANNING



A new paper, **"Higher Education's Role in Advancing Climate Justice"**, shares best practices and case studies

for integrating DEIAJ principles into climate action planning. Higher education institutions are presented with the opportunity to take bold leadership in order to tackle our most pressing challenges, including the systems and injustices at the root of our climate crisis.

[Download the paper](#)

## IMPROVING ACADEMIC RESEARCH FOR CLIMATE SOLUTIONS



**"The Future of Academic Research on Climate Solutions"**, a report funded by the Alfred P. Sloan Foundation and

produced in collaboration with researchers from the University of Massachusetts Amherst's Energy Transition Institute, evaluates the current climate research landscape supported by the U.S. federal government and highlights key levers to improve the effectiveness of academic research for climate solutions.

[Download the paper](#)

## LEADING COMMUNITY RESILIENCE BUILDING WORKSHOPS



Second Nature, in partnership with The Nature Conservancy, has been working with Climate Leadership

Network signatories to bring the Community Resilience Building (CRB) Workshop process to their campus-communities. CRB is a unique, "anywhere at any scale", community-driven process, rich with information, experience, and dialogue, where participants identify top risks, current strengths, challenges, and priority actions to improve community resilience for the present and the future. Find examples of the CRB Workshop process from [University of Minnesota Morris](#) and [San Francisco State University](#).

# WEBINARS

## SPEAKER TO ACTION WEBINAR SERIES

### SPEAKER - to - ACTION SERIES

FALL 2022

Students on college campuses are a powerful voice for climate action. Second Nature hosted webinars dedicated to preparing future

leaders to adapt to, and help to solve, the climate crisis. **“Activating the Power of Storytelling and Student Leadership for Intersectional Climate Justice”**, focused on harnessing the interests and power of students’ energy to cultivate climate leaders, support campus sustainability movements, and make an impact globally and locally.

[Visit the website](#)

## PREPARING FOR COP27 WEBINAR SERIES

This three-part webinar series was developed by the University Climate Change Coalition (UC3), Second Nature, and the Research and Independent Non-Governmental Organizations (RINGOs) constituency to provide anyone interested in the international climate negotiations with a comprehensive overview of the UNFCCC process, including policy questions and issues to be addressed in the upcoming COP27 negotiations.

[First webinar](#)

[Second webinar](#)

[Third webinar](#)



# GATHERINGS

## SUMMIT 2022

The Higher Education Climate Leadership Summit, hosted by Second Nature and the Intentional Endowments Network, is the premier annual gathering of higher education leaders committed to addressing inequality and the climate crisis. Nearly 600 people attended the 2022 Summit in Miami. Thirty-five sessions provided the space for courageous conversations, the creation of new partnerships, connecting with peers and cross-sectoral climate champions, all towards the overarching goal of finding solutions to the most consequential climate and justice issues of our time.

## UC3 SUMMIT

The University Climate Change Coalition's (UC3) Summit in 2022 brought together higher education leaders from 13 tier-1 research universities across the United States, Mexico, and Canada. This in-person gathering at the University of British Columbia featured roundtable discussions and panels focused on supporting universities as they move forward with their climate action planning.

## COP27

Several Second Nature staff led a delegation of higher education leaders at COP27 in Sharm El-Sheikh, Egypt. While there to represent our networks and to inform others of higher education's climate leadership in the United States, we also hosted a networking reception, and facilitated several sessions.



# SOLUTIONS CENTER

The Solutions Center has long been a valued resource for sustainability managers to learn about high-impact decarbonization solutions.

In 2022, Second Nature made strides towards developing this resource into a vetted marketplace that could connect users with trusted service providers. A dedicated fellow was hired in the fall of 2022 to design and implement changes to the Solutions Center that included prototyping potential new enhancements to the site and testing it with stakeholders.

Changes included development of sponsor profiles for vetted service providers, the creation of resources to help with climate action planning and RFP writing, and new solution layouts that support embedded content.



## Total Energy Management



Incorporate a comprehensive and systematic approach towards your entire energy portfolio to ensure all opportunities are uncovered and nothing gets overlooked





### **3** | PARTNERING FOR CLIMATE ACTION



# PARTNERING FOR CLIMATE ACTION

## COMMUNITY CONVERSATIONS SERIES - SUSTAINABLE ENDOWMENTS INSTITUTE

In 2022, Second Nature partnered with the Sustainable Endowments Institute to host monthly peer-to-peer calls. With revolving monthly topics selected by attendees, the Community Conversations series sought to foster connections in the sector and provide a space for sharing experiences and sourcing solutions.



## PARTNERING WITH THIS IS PLANET ED

Developed in partnership with The Aspen Institute's [This Is Planet Ed](#) and [MIT's Office of Sustainability](#), "**Higher Ed and Climate Provisions in the Inflation Reduction Act**" overviews the primary ways the Inflation Reduction Act supports the decarbonization and climate work of the higher education sector. The paper outlines the number of ways higher education institutions can benefit from the IRA.

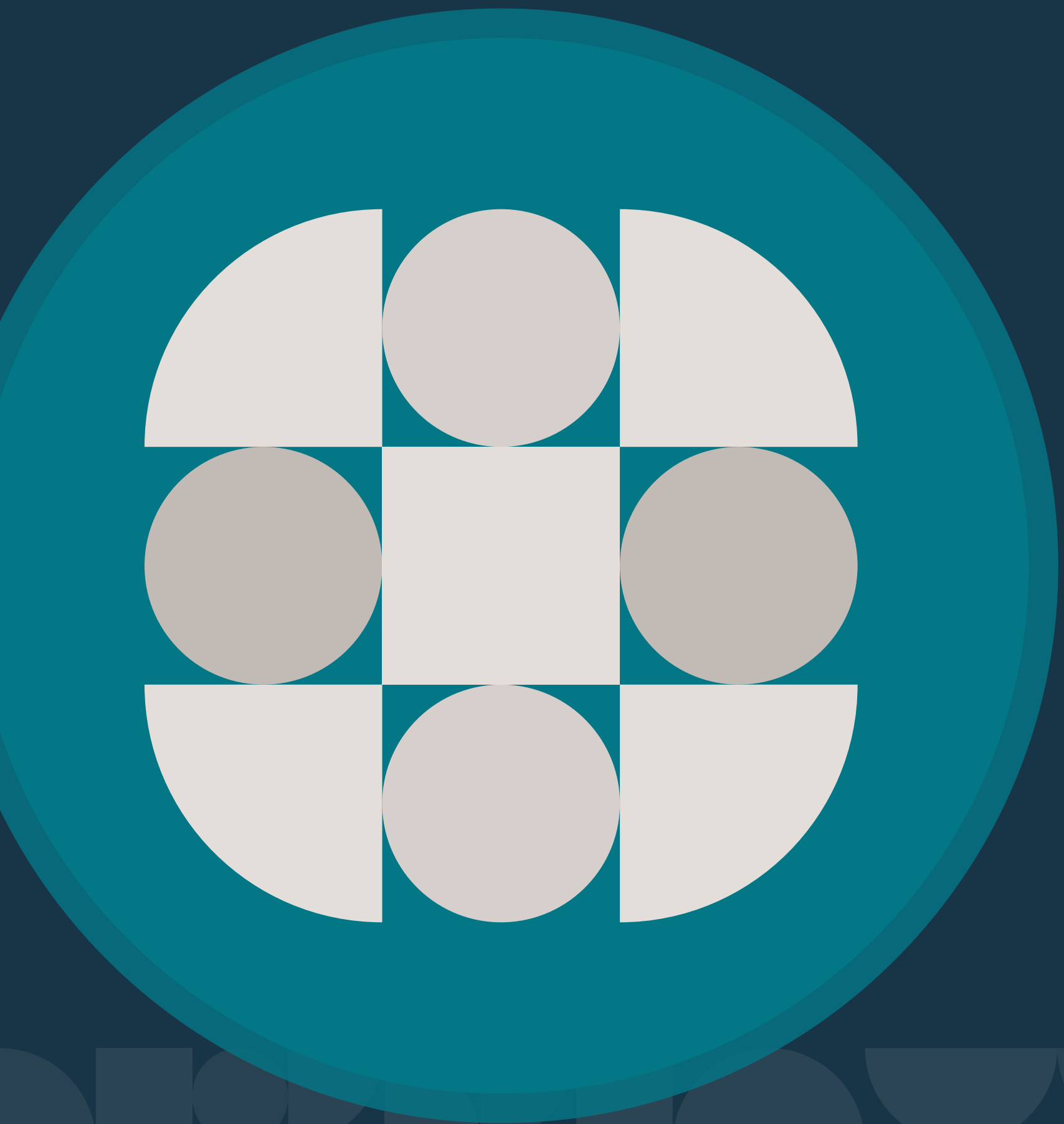
[Read report](#)

## BLACK SUSTAINABILITY, INC. (BSI)

Second Nature has partnered with Black Sustainability, Inc. to advance diversity, equity, and inclusion in the green economy. Working together, Second Nature and BSI seek to create and expand opportunities for, and connections to, Black sustainability professionals in higher education, and foster relationships between BSI's members and the Climate Leadership Network signatories, our partners, and institutional contacts. Deepening engagement with BIPOC communities, raising awareness of resources like the Solutions Center, and increasing intentional investments in BSI and between campuses and Black sustainability practitioners will help to amplify climate justice.

[Visit the page](#)

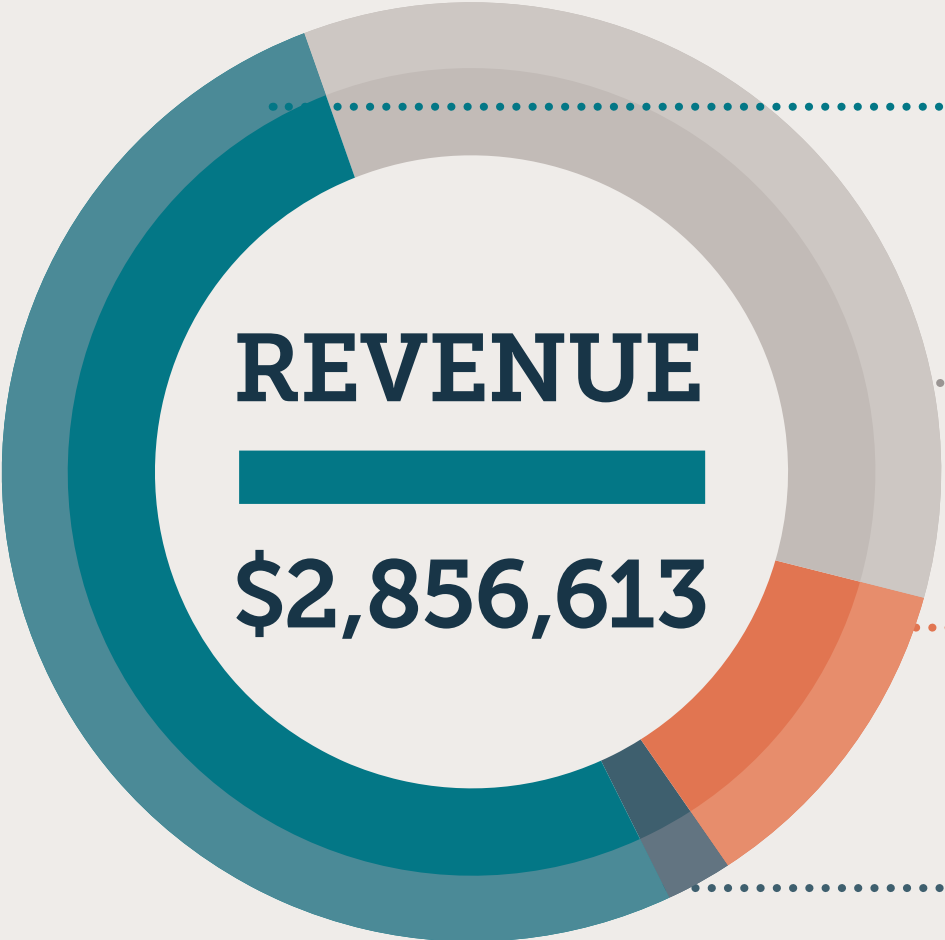




# 4 | SUPPORTING OUR NETWORK



# BY THE NUMBERS



Grants / Contributions  
**\$1,485,397** (52%)

Membership Dues  
**\$979,950** (34%)

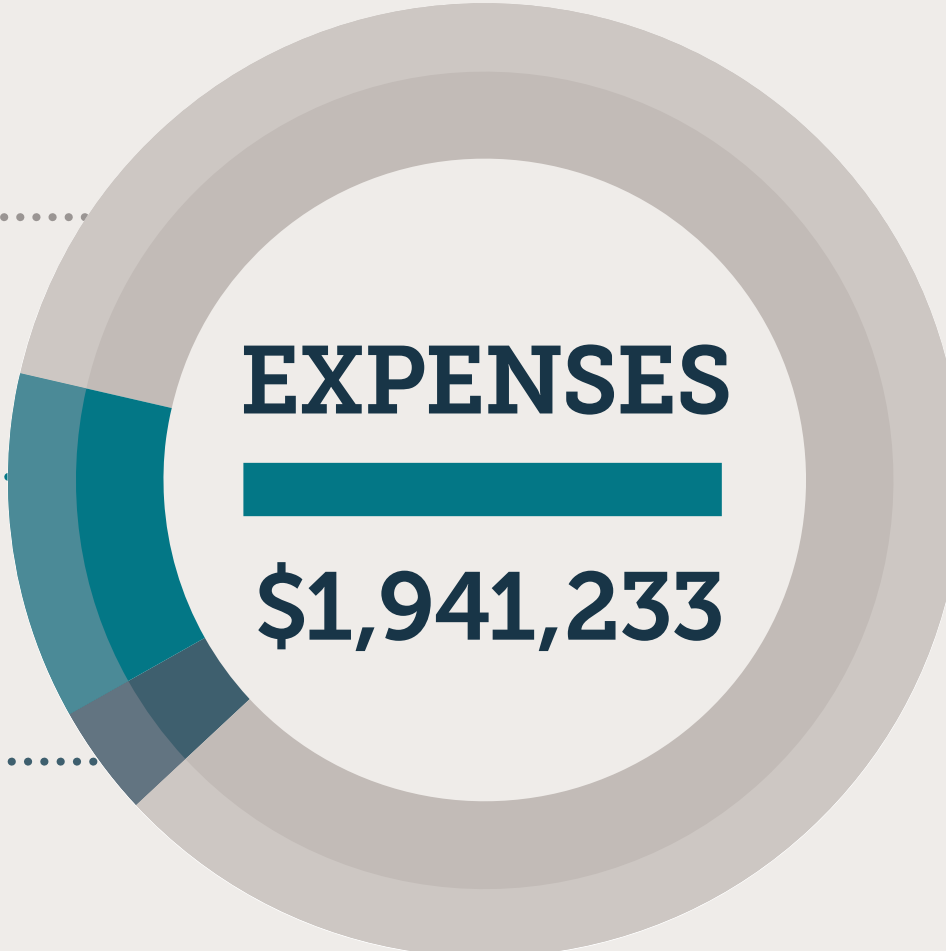
Conference Revenue  
**\$324,720** (12%)

Other Income  
**\$66,546** (2%)

Program Development  
**\$1,636,693** (84%)

Management / General  
**\$235,180** (12%)

Fundraising  
**\$69,360** (4%)



**EXPENSES**  
**\$1,941,233**



# WHO WE ARE - STAFF\*



**Timothy Carter**  
President



**Blythe Coleman-Mumford**  
Climate Programs Southeast  
Regional Manager



**Padmini Das**  
Tisch Fellow



**Bridget Flynn**  
Climate Programs  
Senior Manager



**Joelle Geisler-Haley**  
Administrative  
Operations Manager



**Meredith Leigh**  
Carbon Offsets Fellow



**Katherine MacHolmes**  
DEIAJ Associate



**Shaina Maciejewski**  
Climate Programs  
Data Manager



**Michele Madia**  
Senior Director



**Kristan Maxie**  
Community Colleges and  
Workforce Development  
Fellow



**Steve Muzzy**  
Climate Programs  
Senior Manager



**Bari Samad**  
Director of Communications  
and Marketing



**Cami Sockow**  
Climate Programs Midwest  
Regional Manager



**Samantha Thomas**  
Climate Programs Data  
and Evaluation Manager



**Molly Toth**  
Communications and  
Marketing Manager



**Jayson Toweh**  
America Is All In  
Fellow



**Karen Wheeler**  
Director of Finance  
and Administration

\*current as of September 2023

# WHO WE ARE - BOARD

---



**Timothy Carter**  
Ex Officio – President,  
Second Nature



**Javier Cevallos**  
President, American Academic  
Leadership Institute



**Mark Chambers**  
Director, Earth Alliance



**Meghan Chapple**  
Vice President, Sustainability,  
Georgetown University



**David L. Finegold**  
Former President, Chatham  
University and Senior Advisor and  
Vice President for Corporate and  
Social Responsibility, Torrgreen USA



**Dianne F. Harrison**  
President Emerita, California  
State University, Northridge



**Rachel Hodgdon**  
CEO, International WELL  
Building Institute



**Jia Hu**  
Associate Professor and Associate  
Director, School of Natural  
Resources and the Environment,  
University of Arizona



**Steven Knapp**  
Vice Chair – CEO, Carnegie  
Museums of Pittsburgh



**Christine Scott Nelson**  
Chair – Trustee of Allegheny  
College and Chair of the Board  
of Laspau, a Harvard Affiliate



**Judith A. Ramaley**  
Trustee, Portland State University  
and President Emerita, Winona  
State University



**Nathaniel Smith**  
Founder and Chief Equity Officer  
of the Partnership for Southern  
Equity (PSE)



**Karen Wheeler**  
Ex Officio Treasurer – Director  
of Finance and Administration,  
Second Nature

**Second Nature is committed to accelerating climate action in,  
and through, higher education.**

We do this by mobilizing a diverse array of higher education institutions to act on bold climate commitments, to scale campus climate initiatives, and to create innovative climate solutions. We align, amplify, and bridge the sector's efforts with other global leaders to advance urgent climate priorities.

**[secondnature.org](https://secondnature.org)**



160 Alewife Brook Pkwy #1182  
Cambridge, MA 02138  
617.722.0036  
[info@secondnature.org](mailto:info@secondnature.org)

**Photo Credits:** Photo Credits: p1 - photo by Arizona State University // p2 - photo by Second Nature // p3 - photo by Second Nature // p5 - photo by Cytonn Photography on Unsplash // p6 - Left: photo by Second Nature, Center: photo by Jopwell Collection on Unsplash, Right: photo by ThisisEngineering RAEng on Unsplash // p10 - photo by Shinobu'sAdventures distributed under a CC BY-SA 4.0 license // p11 - photo by UW-Madison // p14 - photo by Compare Fibre on Unsplash // p15 - photo by Second Nature // p18 - photo by Cytonn Photography on Unsplash